

CLIMATE COMFORT | COOLING AND FREEZING FOR MOBILE SERVICES

MOBILE flexcool — THE MOBILE
COMPRESSOR REFRIGERATION CONTAINERS



A WORLD OF COMFORT







MOBILE FLEX-COOL COLD CHAIN SOLUTION

Our compressor cooling containers are the flexible and convenient solution for the professionals who have to transport perishable goods on board standard cars or vans while still maintaining health and safety standards.

CONSTRUCTED FOR DURABILITY

- Made of tough molded polyethylene
- Light weight, rotationally molded, single piece construction for durability
- Components designed and tested for use in mobile applications
- Constructed of food-grade materials to avoid contamination
- Convenient portability with integrated handles
- Easy to clean

- Hermetic compressor for efficient and reliable operation
- Integrated battery monitor to prevent dead battery
- Quick connect to DC available

USER-FRIENDLY INTERFACE

- View current temperature and status without opening the container
- Digital readout for precise temperature set point control
- Celsius or Fahrenheit settings

FLEXIBLE COOLING

- Powerful cooling and/or freezing options available
- Can be moved from one application to another
- Runs on 12/24V DC or 110-240V AC (242 G freezing = 110-240V AC (special order available for 24V DC)
- Locks and maintains consistent temperature

TROUBLE-FREE COOLING TRANSPORTS FOR CULINARY AND MEDICAL SECTOR

Our portable cooling containers are the perfect solution for the transport of everything from food to medical and pharmaceutical supplies. Containers are also easy to clean and are in compliance with health and safety standards.



TOP LOADER

MOBILE REFRIGERATION CONTAINERS



TOP LOADER (LOADED FROM ABOVE)

Version	5 F		8 F	
Capacity (Liters/Gallons)	22 / 5		32 / 8	
Cooling temperature at 30°C/86°F ambient temperature (°C/°F)	-24°C / -11°F		-24°C / -11°F	
Current draw at 12-24 V	9 - 4 A		9 - 4 A	
Current draw at 100-240 V	1.6 - 0.8 A	50 - 60 Hz	1.6 - 0.8 A	50 - 60 Hz
Wall foam insulation	65 - 70 mm PU*	K < 0.4 W/(m²K)	65 - 70 mm PU*	K < 0.4 W/(m²K)
Interior dimensions (L x W x H in cm/in)	29 x 23 x 35		36 x 25 x 35	
	11 x 9 x 13.5		13 x 9 x 13	
Exterior dimensions (L x W x H in cm/in)	59 x 38 x 48		67 x 39 x 48	
	24 x 15 x 19		26.5 x 15.5 x 19	
Weight (kg/lb)	17 / 37.5		19 / 42	

* PU = wall foam insulation with polyurethane rigid foam



TOP LOADER (LOADED FROM ABOVE)


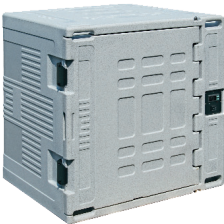

Version	14 F		22 F	
Capacity (Liters/Gallons)	56 / 14		82 / 22	
Cooling temperature at 30°C/86°F ambient temperature (°C/°F)	-24°C / -11°F		-24°C / -11°F	
Current draw at 12-24 V	9 - 4 A		9 - 4 A	
Current draw at 100-240 V	1.6 - 0.8 A	50 - 60 Hz	1.6 - 0.8 A	50 - 60 Hz
Wall foam insulation	70 mm PU*	K < 0.4 W/(m²K)	80 mm PU*	K < 0.4 W/(m²K)
Interior dimensions (L x W x H in cm/in)	45 x 33 x 35 17.5 x 13 x 13.5		54 x 37 x 36 20.5 x 14 x 13.5	
Exterior dimensions (L x W x H in cm/in)	80 x 50 x 50 31.5 x 19.5 x 19.5		94 x 56 x 55 37 x 22 x 21.5	
Weight (kg/lb)	19 / 57.5		29 / 64	

* PU = wall foam insulation with polyurethane rigid foam

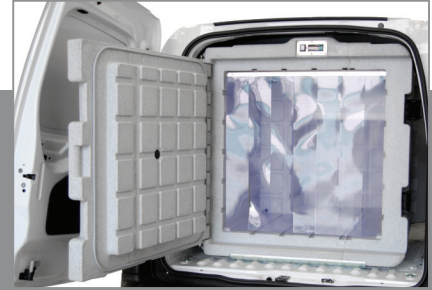


FRONT LOADER

MOBILE REFRIGERATION CONTAINERS

FRONT LOADER (LOADED FROM FRONT)						
	Version		Version		Version	
	37 C 37 F		87 C 87 F		242 C 242 F	
Capacity (Liters/Gallons)	140 / 37		330 / 87.2		915 / 241.7	
Cooling temperature at 30°C/86°F ambient temperature (°C/°F)	NDN: -10°C / 14°F FDN: -21°C / -6°F		NDN: 0°C / 32°F FDN: -21°C / -6°F		NDN: > 0°C / 32°F FDN: -24°C / -11°F	
Current draw at 12-24 V	9 - 4 A 18 - 9 A		9 - 4 A 18 - 9 A		18 A 25 A	
Current draw at 100-240 V	1.6 - 0.8 A 3 - 1.5 A	50 - 60 Hz	1.6 - 0.8 A 3 - 1.5 A	50 - 60 Hz	1 - 0.6 A 3 - 1.5 A	50 - 60 Hz
Wall foam insulation	80-100 mm PU*	K < 0.4 W/(m²K)	100 mm PU*	K < 0.4 W/(m²K)	130 mm PU*	K < 0.28 W/(m²K)
Interior dimensions (L x W x H in cm/in)	62 x 41 x 51 24 x 16 x 20		81 x 61 x 66 32 x 24 x 26		120 x 93 x 83 47 x 36.5 x 31.5	
Exterior dimensions (L x W x H in cm/in)	100 x 62 x 71 39 x 24 x 27.5		102 x 100 x 91 40 x 39 x 35.5		150 x 120 x 118 59 x 47 x 46	
Weight (kg/lb)	40 / 88 40 / 88		90 / 199		160 / 352 164 / 362	

* PU = wall foam insulation with polyurethane rigid foam



FRONT LOADER

MOBILE REFRIGERATION CONTAINERS ACCESSORIES

Description	Product:	For Model:
Wire Shelves/Racks/Dividers Adjustable to suit the contents of your load <ul style="list-style-type: none"> • 37G Shelf (30lb. capacity) • 87G/242G Shelf (100lb. capacity) 	Shelf/Divider Shelf/Divider Wire Shelf	37 G (Cooling & Freezing) 87 G (Cooling & Freezing) 242 G (Cooling & Freezing)
Transport Kits Wheels <ul style="list-style-type: none"> • Available for 37G and 87G units • Provides ease of mobility Pallet Base <ul style="list-style-type: none"> • Standard for 242G units • Available for 87G and 242G units • Allows for easy transport in truck or van 	Wheel Kit Wheel Kit Pallet Base	37 G (Cooling & Freezing) 87 G (Cooling & Freezing) 242 G (Cooling & Freezing)
In-Cab Display View Temperature of your load conveniently from inside the cab <ul style="list-style-type: none"> • Available for the 87G and 242G units 	Remote Display Kit	87 G (Cooling & Freezing) 242 G (Cooling & Freezing)
Plastic Strip Curtains Reduce cold air leakage when door is open <ul style="list-style-type: none"> • Available for 37G and 87G cooling unit (standard on 87G freezing unit and 242G cooling and freezing units) 	Plastic Strip Curtains	37 G (Cooling & Freezing) 87 G (Cooling & Freezing) 242 G (Cooling & Freezing)
Tie Down Kit Easily secure unit to vehicle floor <ul style="list-style-type: none"> • Available for the 37G or 87G units 	Tie Down Kit Tie Down Kit	37 G (Cooling & Freezing) 87 G (Cooling & Freezing)



Espar Products, Inc.
(800) 387-4800
(905) 670-0960
www.espar.com

